

PLATINUM PACKAGE JOINTLESS SUPERFLAT HIPERPOLISHED FLOOR

INTRODUCTION

CBS Middle East's Platinum package is a world leading service that caters for the highest specification of floors there's ever been. In addition to our industry leading QA, Safety, and Installation procedures, this package takes concrete flooring to the next level.

Each Platinum package involves detailed dialogue with the client and end user to create a bespoke tailored set of features that surpass anything else on the market, not only for the floors current use but also for future proofing.



12 GREAT BENEFITS

1

Platinum Finish - Dry Shake and Densified and Ground and Polished and Sealed Surface!

A surface with unbelievable impact and gauging resistance. Multiple steps results in a surface that can be four times as hard as untreated concrete. This enhanced hardness provides superior resistance to impact damage, ensuring the floor can withstand heavy machinery, dropped objects, and scraped pallets whilst showing less signs of wear and tear.

2

Even Denser Surface for Enhanced Durability

Through the densification process, the concrete floor becomes denser and more compact as the liquid densifier fills micro holes in the top surface. This additional densification of an already very dense power trowelled dry shake surface, surpass with ease AR0.5 standards, and leaves a sealed, dust free surface

3

Aesthetically Pleasing Surface with an even more Uniform Finish

Grinding and polishing the dryshake concrete floor results in a visually appealing surface with a more uniform finish than traditional finishing methods. This finish has to be seen to be believed, your tenants won't believe its concrete! There are also no delamination repairs due to trade secret methods that this package incorporates.

4

Floor Tolerances Taken to the Next Level!

Using our unique laying and finishing method, we can offer FM1, DM1 and even bespoke flatness's. By using specific rectifying, and polishing techniques incorporated into the finishing and grinding process, we can offer unrivalled tolerances that future proof the floors and ensure VNA racking, robot and forklift compliance.





5 Wet Live Surveying

Increased flatness by use of our partner 3DAC's live concrete surveying, giving instant feedback to the installers to make floors flatter whilst the concrete is still wet!

6 Sealed Water-Resistant Surface

The polished dryshake floor becomes so dense that it is virtually waterproof. The densification process reduces the floor's porosity, inhibiting liquids from infiltrating the surface and causing stains or damage. This water resistance simplifies maintenance procedures, reduces cleaning time, and contributes to a hygienic environment in the warehouse.

7 More Stain-Resistant Surface with Fewer Tire Marks and Blemishes

Grinding and polishing the concrete floor renders it more resistant to stains, minimizing the risk of discoloration from spills or chemical exposure. Additionally, the smooth surface reduces the likelihood of tire marks, oil stains, and other blemishes that can mar the appearance of the warehouse floor. This stain resistance ensures a cleaner and more professional image for the facility.

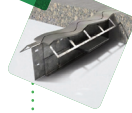
8 No Chance of Delamination and Unsightly Repairs

By using our unique methods, unlike standard dry shake floors, we virtually eliminate the risk of delamination, a common issue that can occur with dry shake. Delamination not only compromises the floor's aesthetics but also requires costly repairs and maintenance. By opting for the Platinum package, warehouses can enjoy a long-lasting floor without the risk of unsightly repairs.

9 Enormous Bay Sizes!

As an option within this package, we can incorporate bay sizes of almost any size, 1000's of square meters per pour!

10 Sinusoidal Day Joints



Upgrading joints to a 'Wave' day joint means an uninterrupted seamless passage of forklifts and robots, minimising wear and rocking and allowing increased speed of movement.

11 Greener - Increased Light Reflection for Safety and Reduced Energy Costs

Polished concrete floors possess excellent light-reflective properties, enhancing visibility within the warehouse. This increased light reflection contributes to a safer working environment by reducing shadows and improving overall visibility. Additionally, the enhanced brightness can lead to reduced reliance on artificial lighting, resulting in energy savings and lower lighting costs for the facility.

12 Zero Protruding Fibres, or Surface Fibres

The application of a layer of dryshake, in conjunction with the grinding process, means that not only are there no protruding fibres, but there are also virtually no surface fibres. This eliminates the risk of protruding fibres that can cause snagging or potential safety hazards within the warehouse. The removal of these fibres ensures a seamless and flawless floor for optimal functionality.



HUSQVARNA ACCREDITED CONTRACTOR

The Husqvarna Accredited Contractor Network is a curated list of professional contractors, who have been trained by Husqvarna and demonstrated constant, high-quality HIPERFLOOR® and HIPERTROWEL™ outcomes.

Husqvarna Accredited Contractors have access to the latest tooling technology, and are the first to implement updates to the HIPERFLOOR® system processes.

HIPERFLOOR® 10 Year Warranty

Husqvarna Accredited Contractors are the only contractors that can have their work warranted by Husqvarna. This means the concrete has been treated with the HIPERFLOOR® and HIPERTROWEL™ chemicals, and ground with Husqvarna diamond tools under Husqvarna planetary grinders or concrete trowels.

The polished concrete surface will not fade, dull or yellow, as long as ongoing cleaning and care is carried out according to the HIPERFLOOR® Maintenance Guide.



HIPERFLOOR® ACCREDITED



HIPERTROWEL™ ACCREDITED



HUSQVARNA
10 YR WARRANTY
ON APPROVED PROJECTS -